

# Instrument ID

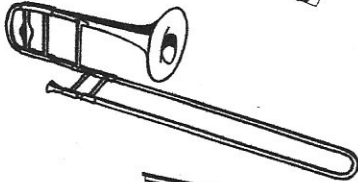
First, match the picture of the instrument with its correct name. Then write the name of the instrument family to which it belongs (string, woodwind, brass, or percussion).

1.



TIMPANI belongs to the \_\_\_\_\_ family.

2.



FRENCH HORN belongs to the \_\_\_\_\_ family.

3.



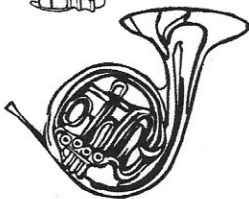
SAXOPHONE belongs to the \_\_\_\_\_ family.

4.



CELLO belongs to the \_\_\_\_\_ family.

5.



BASSOON belongs to the \_\_\_\_\_ family.

6.



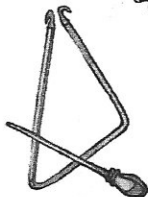
TRIANGLE belongs to the \_\_\_\_\_ family.

7.



TROMBONE belong to the \_\_\_\_\_ family.

8.



HARP belongs to the \_\_\_\_\_ family.

© 2005 Heritage Music Press, a division of The Lorenz Corporation. All rights reserved. Printed in USA.

This page may be reproduced for classroom use. This is a non-transferable license.

# Instrument Seek and Find

Find the instrumental words listed below and circle them in the puzzle. The words can be straight across, up and down, diagonally—or even backwards!

BASS  
 BASSOON  
 BRASS  
 CELLO  
 CLARINET  
 CONDUCTOR  
 FLUTE

HORN  
 OBOE  
 ORCHESTRA  
 PERCUSSION  
 PIANO  
 SAXOPHONE  
 SYMPHONY

TROMBONE  
 TRUMPET  
 VIOLA  
 VIOLIN  
 WOODWINDS

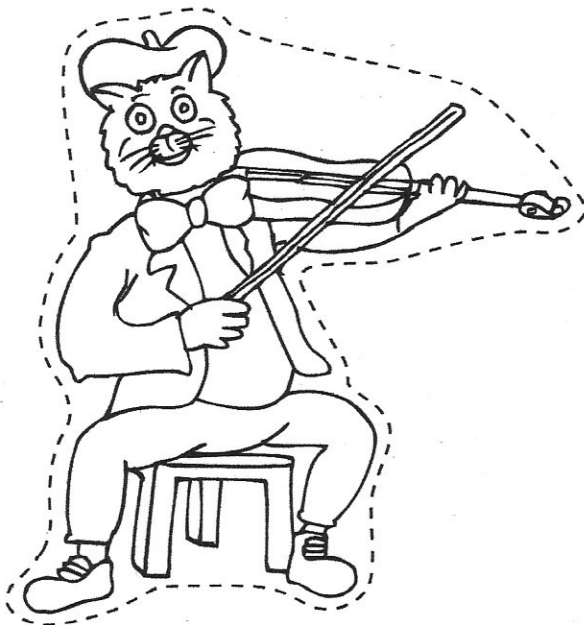
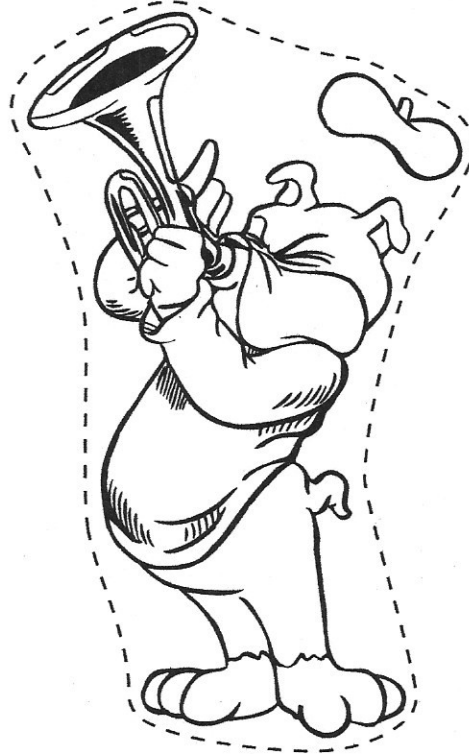
H	W	O	O	D	W	I	N	D	S	W	B	L
J	A	M	R	B	A	R	T	O	K	S	K	I
P	E	R	C	U	S	S	I	O	N	A	A	D
E	S	E	H	G	Y	W	N	P	B	X	E	B
N	Y	T	E	P	M	U	R	T	D	O	J	A
O	I	Q	S	O	P	N	C	E	R	P	E	S
B	O	V	T	G	H	O	R	N	K	H	F	S
M	S	N	R	B	O	I	M	I	B	O	W	O
O	C	X	A	R	N	T	O	R	V	N	Q	O
R	Y	E	M	I	Y	S	A	A	L	E	I	N
T	W	J	L	U	P	S	F	L	U	T	E	L
B	G	O	S	L	S	W	E	C	T	B	K	D
M	I	L	K	C	O	N	D	U	C	T	O	R
V	I	O	L	A	K	B	O	X	L	C	W	A

© 2005 Heritage Music Press, a division of The Lorenz Corporation. All rights reserved. Printed in USA.

This page may be reproduced for classroom use. This is a non-transferable license.

# Sergeant Salty's Happy Hearts Family Band Grades K-3

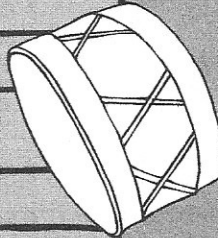
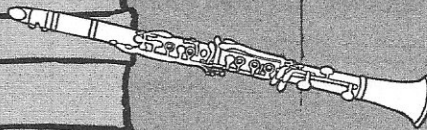
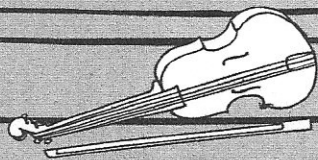
Sergeant Salty is in need of a guest conductor—You! Cut out each animal musician below then paste it on the concert stage sheet, taking care to match each animal to the picture of the instrument it is playing.



© 2005 Heritage Music Press, a division of The Lorenz Corporation. All rights reserved. Printed in U.S.A.

This page may be reproduced for classroom use. This is a non-transferable license.

# Sergeant Salty's Happy Hearts Family Band

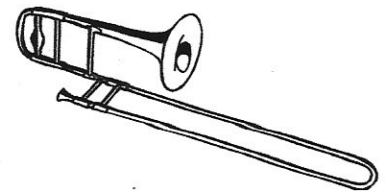
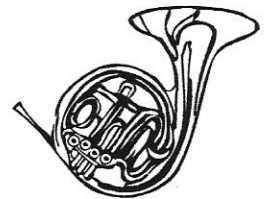
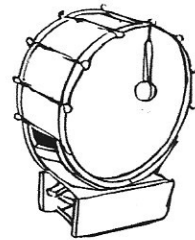
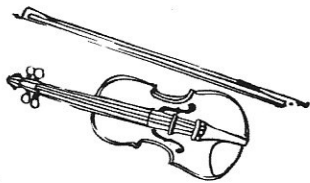
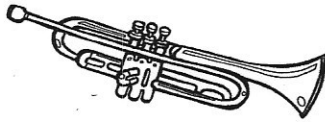


© 2005 Heritage Music Press, a division of The Lorenz Corporation. All rights reserved. Printed in U.S.A.

This page may be reproduced for classroom use. This is a non-transferable license.

# Match the Instruments

Match each instrument picture to another instrument picture that belongs in the same instrument family.



© 2005 Heritage Music Press, a division of The Lorenz Corporation. All rights reserved. Printed in U.S.A.

This page may be reproduced for classroom use. This is a non-transferable license.

# Quick on the Draw

Grades K-3

Draw quarter notes with their stems up on the right.

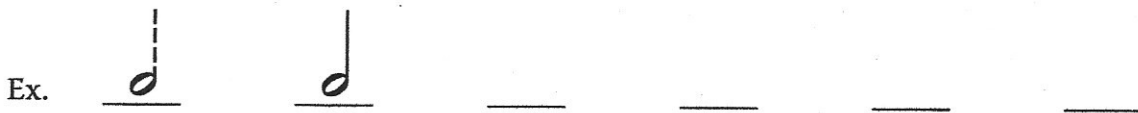
Ex. Step 1 Step 2



Draw quarter notes with their stems down on the left.



Draw half notes with their stems up on the right.



Draw half notes with their stems down on the left.



Draw dotted half notes with their stems up on the right.



Draw dotted half notes with their stems down on the left.



Draw whole notes.



© 2005 Heritage Music Press, a division of The Lorenz Corporation. All rights reserved. Printed in U.S.A.

This page may be reproduced for classroom use. This is a non-transferable license.

# Treble Speller

## Treble Clef Note Names

Every Good Boy Does Fine

F A C E

You can practice reading note names by spelling words with the musical alphabet (A, B, C, D, E, F, and G).

- Using whole notes, spell the following words on the music staff below:

A C E C A B B E G B E E

B A D G E D E A D E D G E B E E F

- Write the words that each set of notes spell:

\_\_\_\_\_

\_\_\_\_\_

- Make up your own words to remember the note names on the staff.

### Examples:

Eat Great Big Dead Flies (Line Notes) \_\_\_\_\_

or

Fix A Cooked Egg (Space Notes) \_\_\_\_\_

© 2005 Heritage Music Press, a division of The Lorenz Corporation. All rights reserved. Printed in U.S.A.

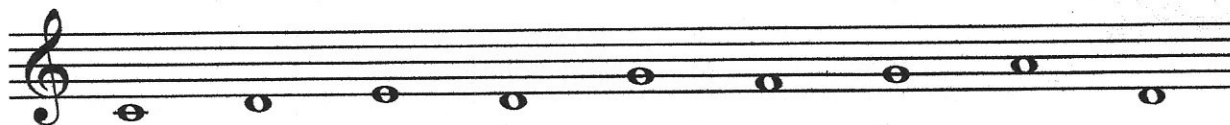
This page may be reproduced for classroom use. This is a non-transferable license.

# Do, Re, Mi and More

Study the musical scale below and the syllable names for each note.



Name each note below by its syllable name.



Below is a familiar tune. Write the syllable name of each note, then sing the song using the syllable names. Can you name that tune?



Below are the beginning notes of a familiar song. Name each note with syllable names, then sing the song using syllable names. Can you name that tune?



© 2005 Heritage Music Press, a division of The Lorenz Corporation. All rights reserved. Printed in U.S.A.

This page may be reproduced for classroom use. This is a non-transferable license.